

A glowing blue microchip is centered on a circuit board. The chip has a grid of small squares on its surface and is surrounded by intricate circuitry. The entire scene is bathed in a blue light, giving it a futuristic and technological appearance.

TPC Semiconductor Market Survey

October 17, 2022

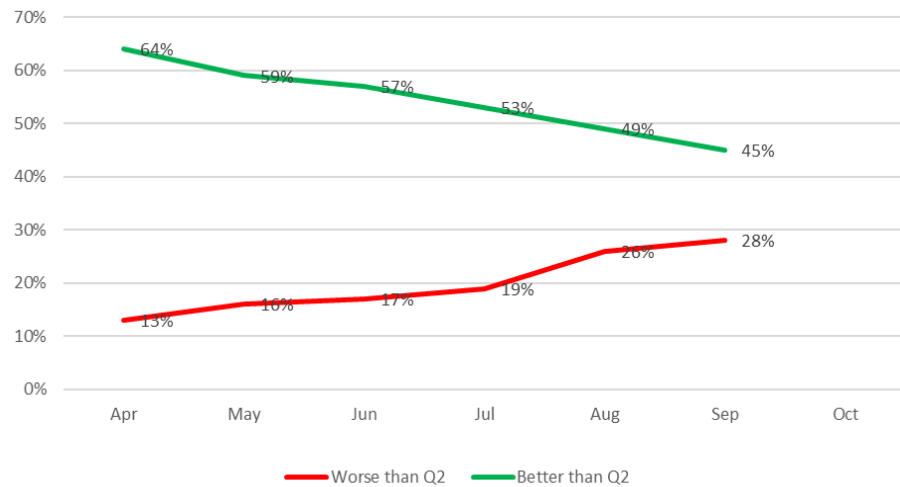
TPC September/October 2022 Survey Summary

*Survey Date: 10/8-13 Respondents: ~6,600 Location: Worldwide (~80% Asia) Who: Active Electronics Industry Professionals
Response Composition (multiple choices): Industrial 41%, Auto 21%, Comm 19%, Computing 18%, Mobile 29%, Data Ctr 19%, Other 18%*

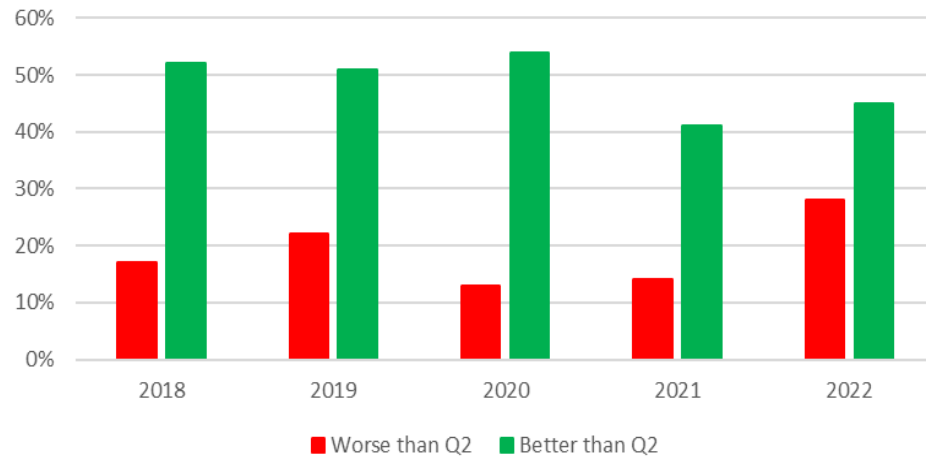
- We recently completed our monthly survey (~6,600 respondents) which saw decreases in both C3Q22's and C4Q22's outlook for growth and seasonality. Additionally, the bookings outlook for C4Q weakened vs. last month's survey. With C3Q bookings remaining roughly the same.
- The survey showed C3Q22 weaker vs. last month with 45% seeing the quarter being better vs. 49% previously; while 28% see it as worse vs. 26% last month.
- The survey showed C4Q22 outlook weaker vs. last month; with 22% expecting q/q growth vs. 24% previously; while 52% see it as weaker vs. 48% last month.
- Backlog cancellation expectations (slide 7) continues to show negative trends and is approaching previous lows.
- Key product inventory and availability (slide 8) showed improvement in availability across all key products and are now at nominal levels. Of note is the significant increase in both DRAM and Analog availability.
- Inventories growth outlook (slide 9) continued to show significant increases in inventories for both C3Q and C4Q.
- The survey also shows pricing (slide 10) continuing to erode for both C3Q (56% see it down >2% q/q) and C4Q (57% see it down >2% q/q).

Q/Q Demand Growth Outlook

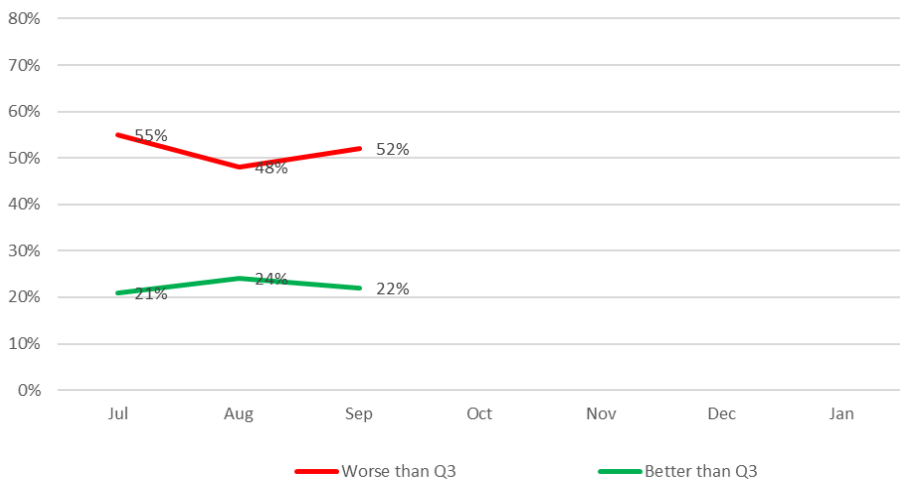
C3Q22 Growth Expectations



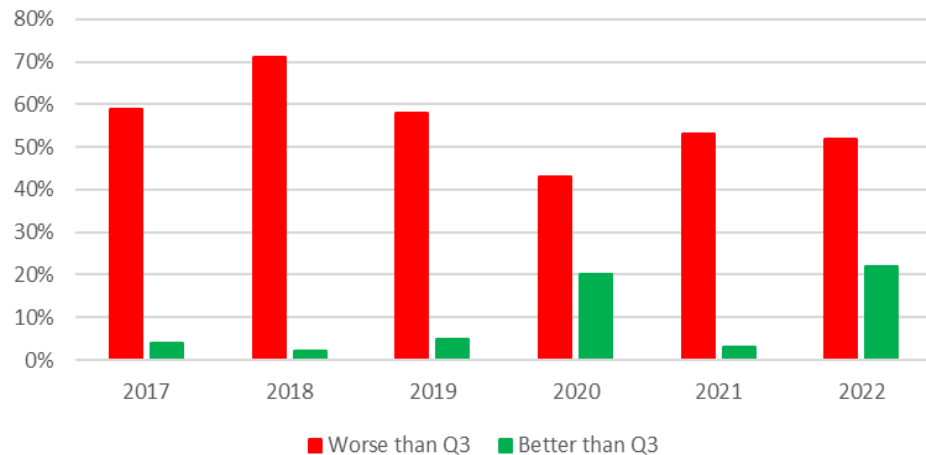
C3Q Growth Expectations vs. C2Q



4Q22 Growth Expectations

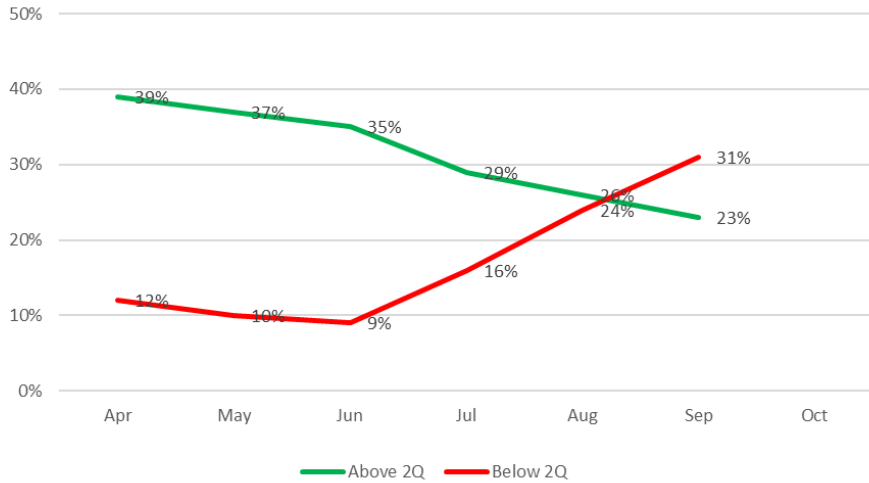


C4Q Growth Expectations

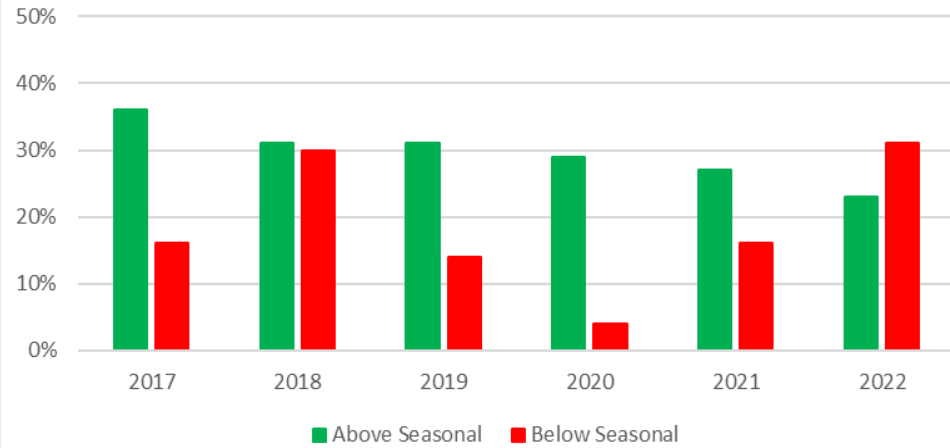


Q/Q Seasonality Expectations

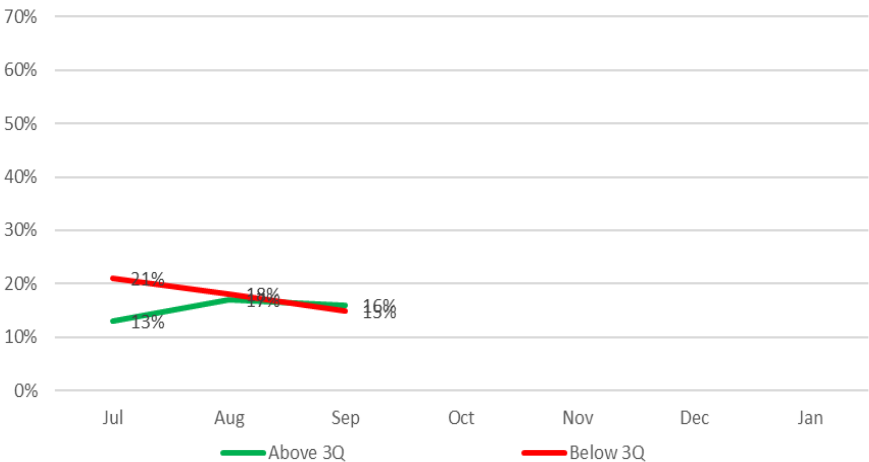
3Q22 Seasonality Expectations



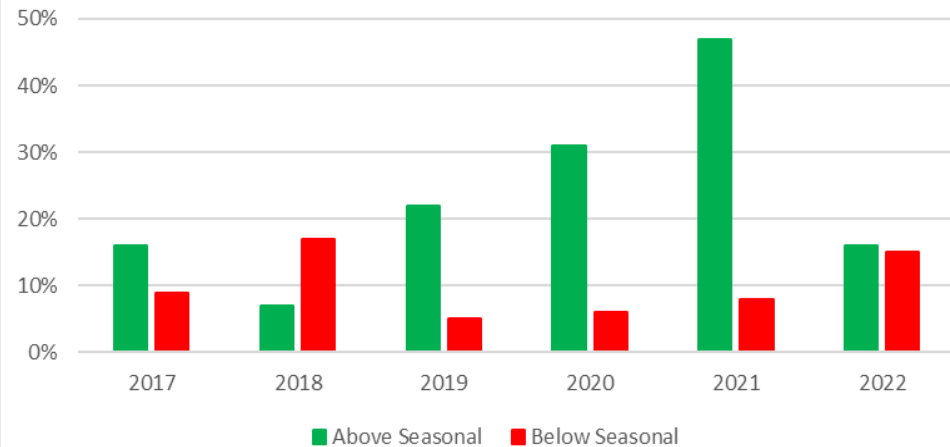
C3Q Seasonality Expectations



4Q22 Seasonality Expectations

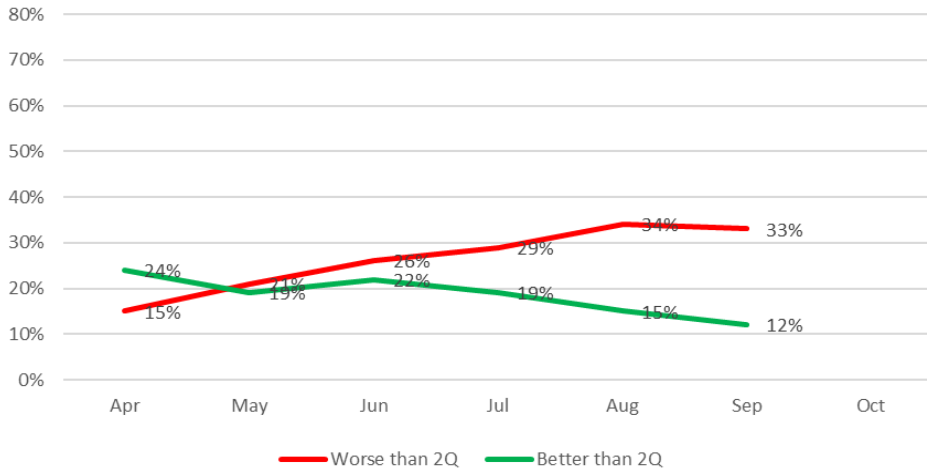


C4Q Seasonality Expectations

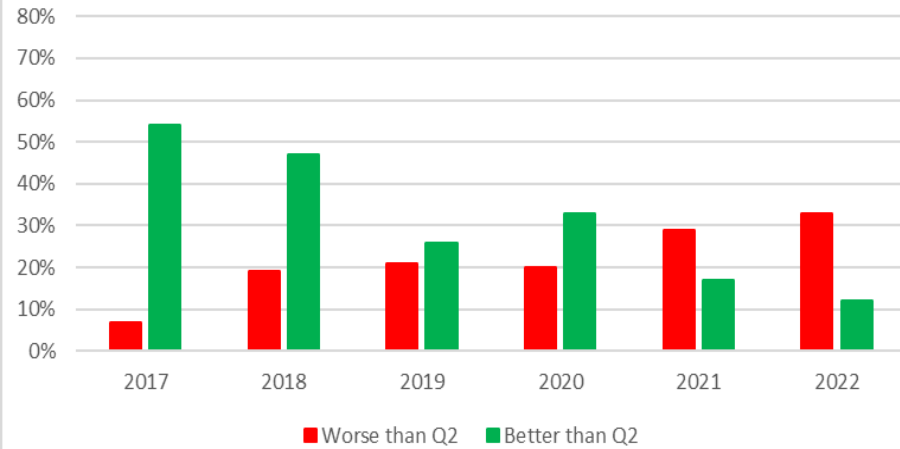


Q/Q Bookings Growth Expectations

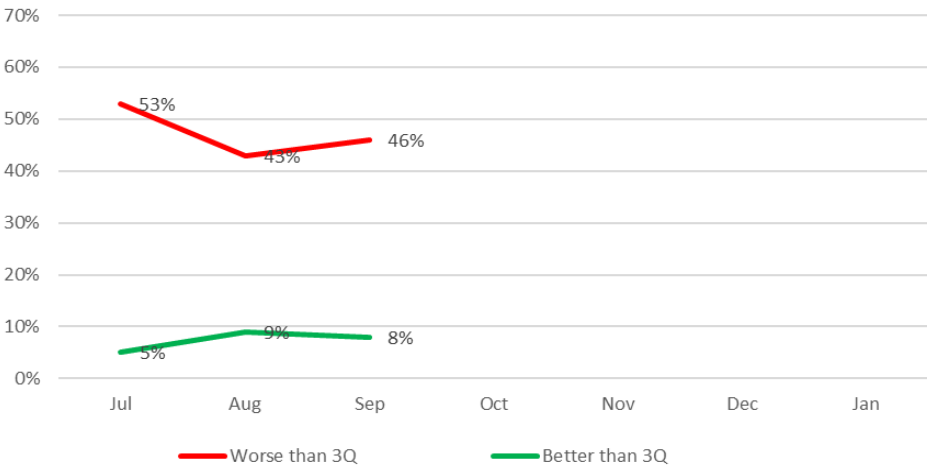
C3Q22 Bookings Expectations



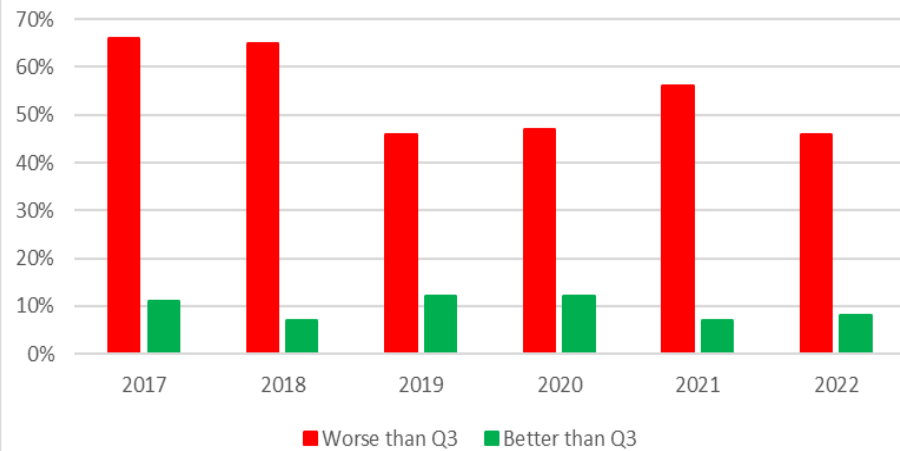
C3Q Bookings Expectations



4Q22 Bookings Expectations

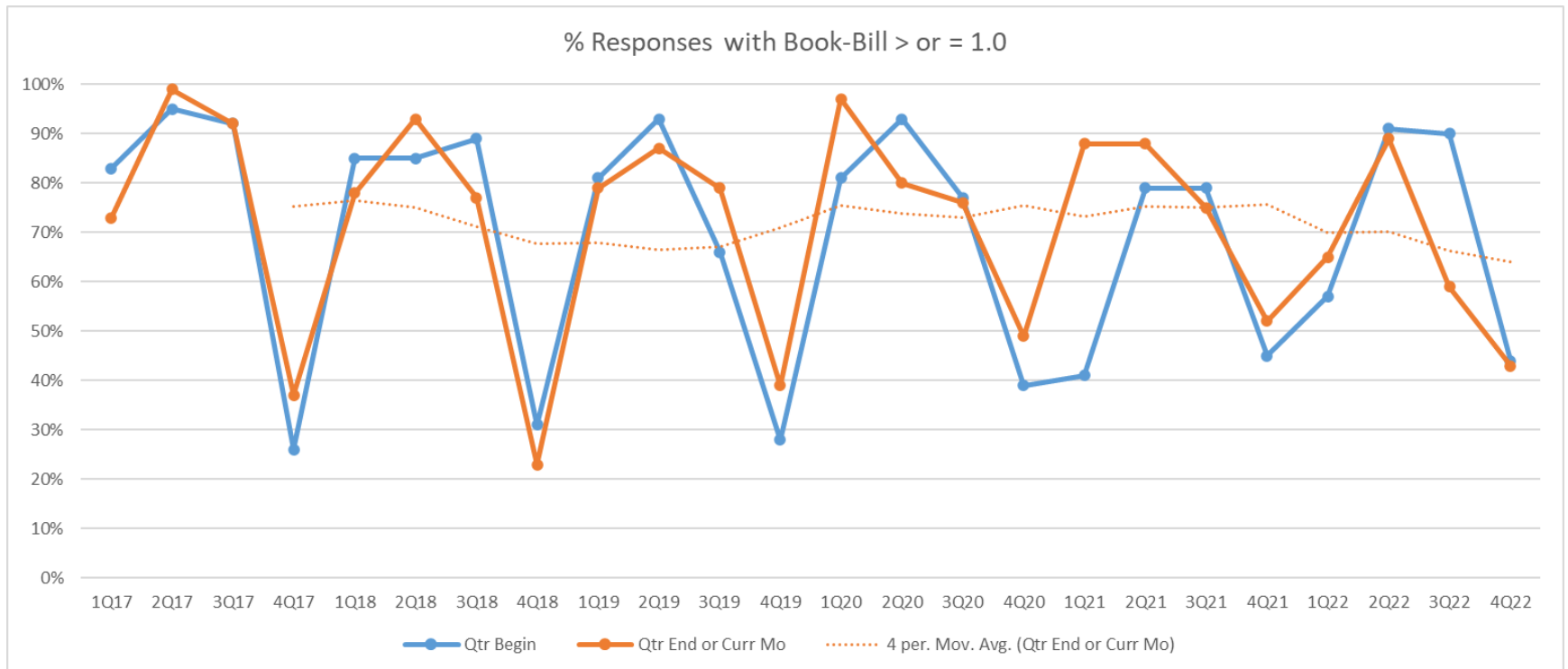


C4Q Bookings Expectations



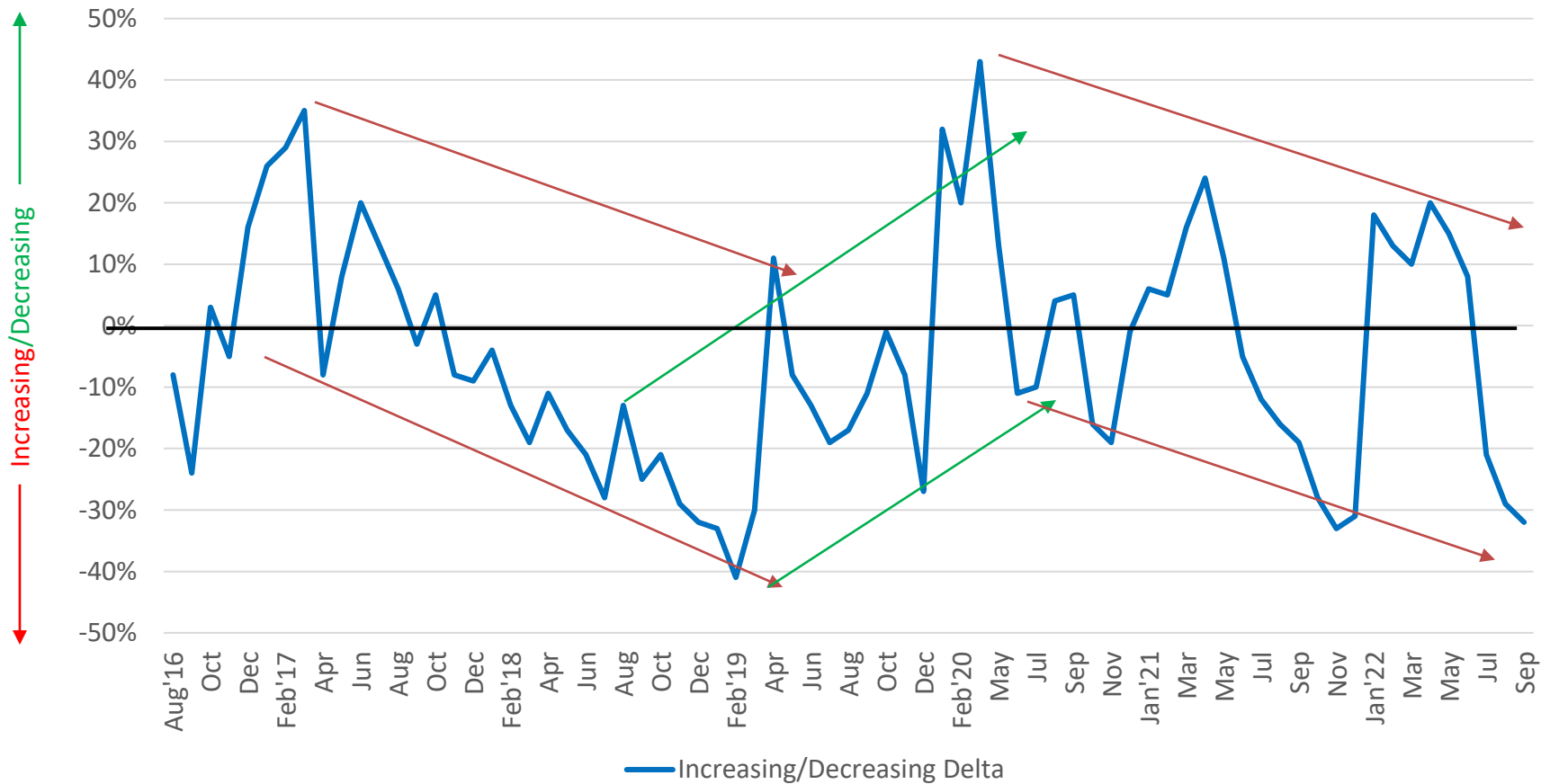
Book to Bill History & Trends

(Calendar quarters)



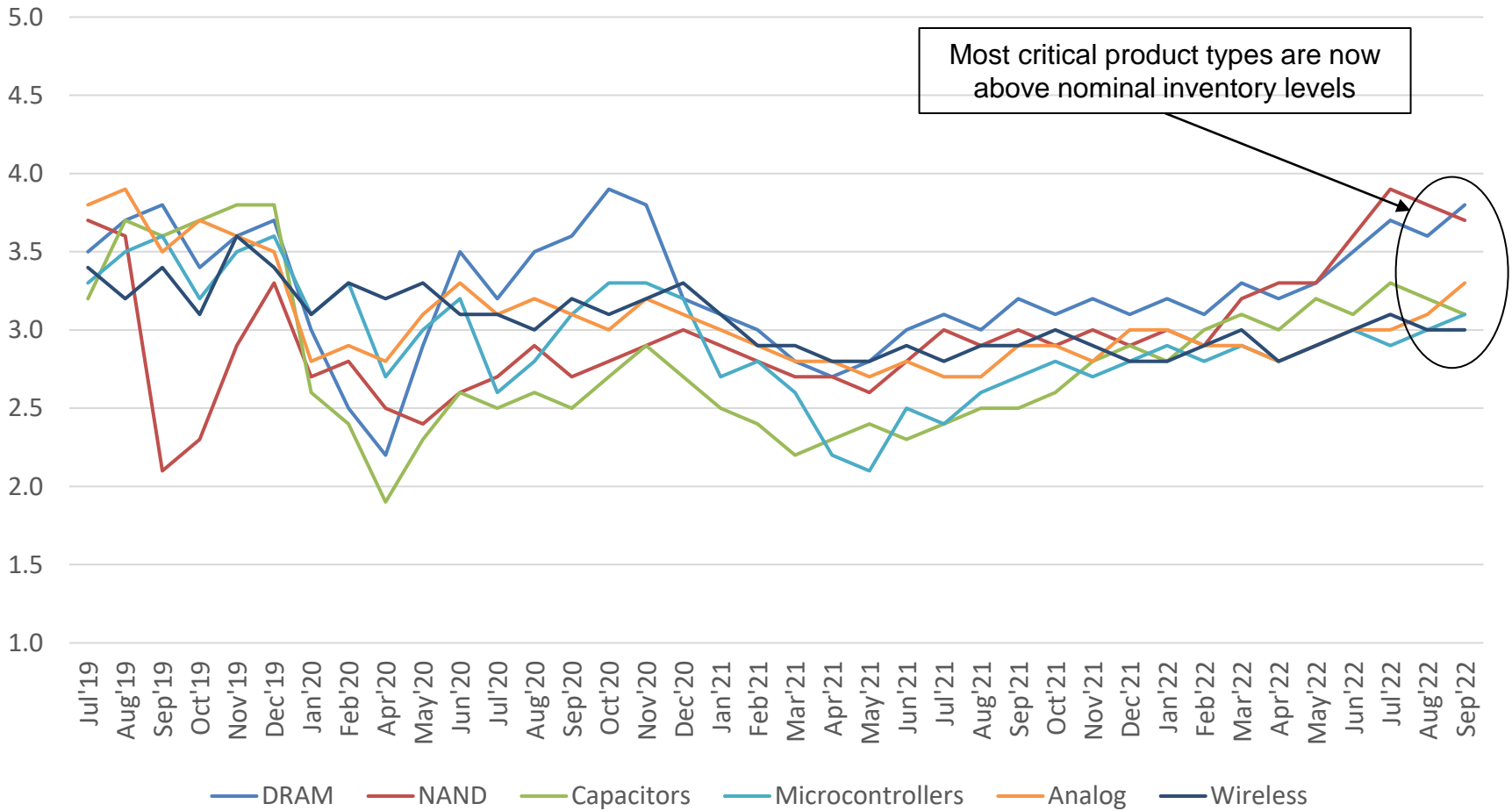
Backlog Order Push Outs/Cancellations vs. 30 Days Ago

(Delta between increasing and decreasing cancellations – Higher % is more positive)



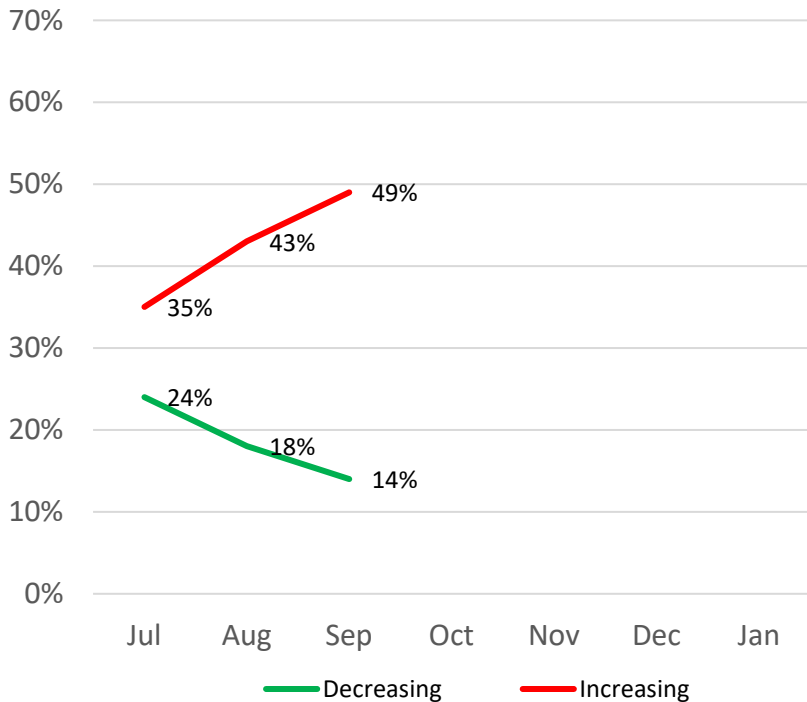
Inventory Status

(Using a scale of 1 to 5 with 1 being extremely low inventory, 3 being the normal amount, and 5 being extremely high; how do you view inventory levels for the following products?)

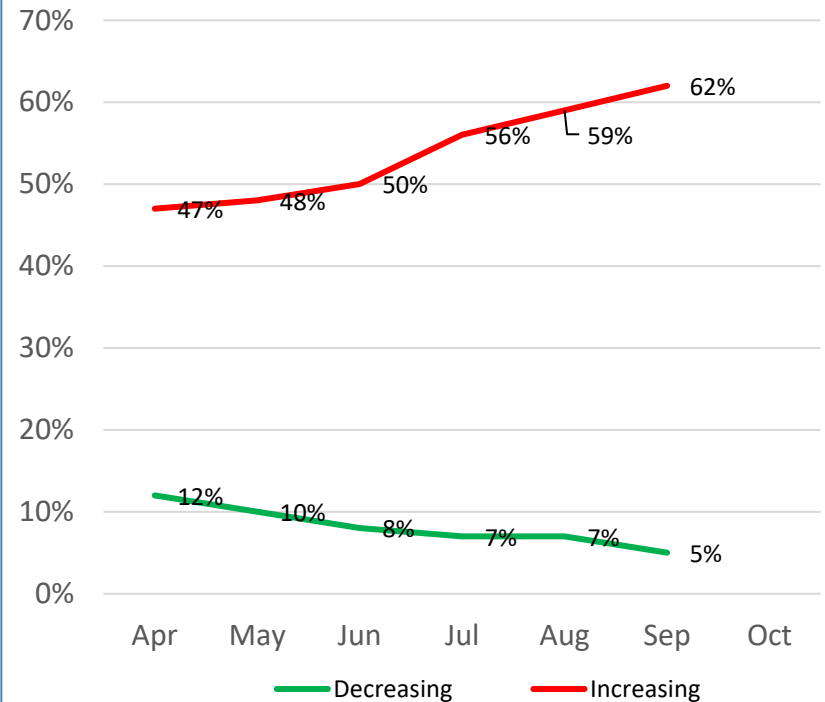


Q/Q Inventory Growth

C4Q22 Inventories vs. C3Q22

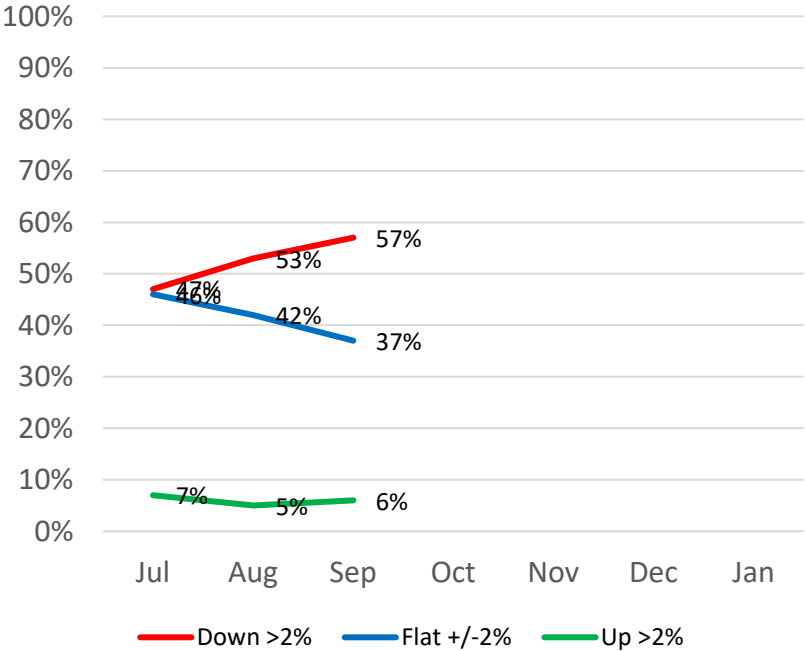


C3Q22 Inventories vs. C2Q22

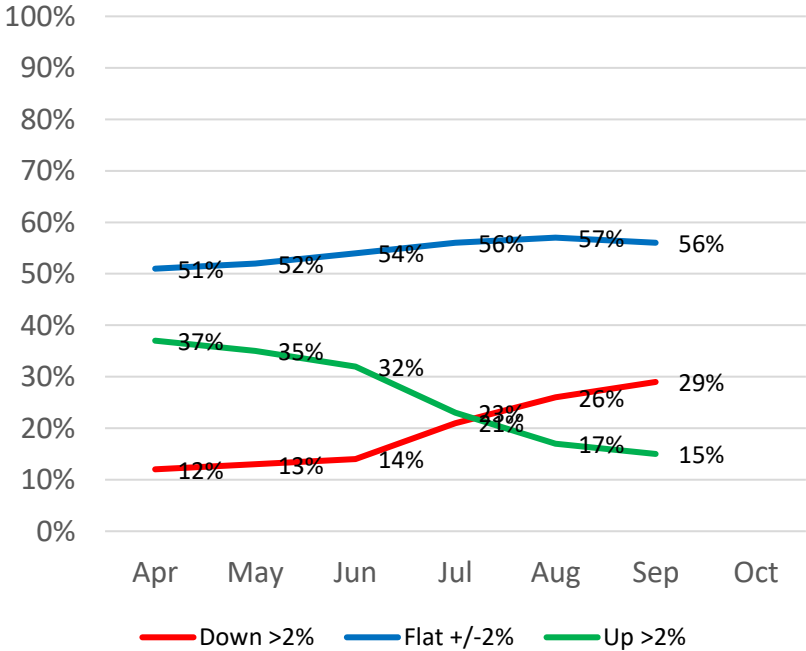


Q/Q Pricing Trends

C4Q22 Pricing vs. C3Q22



C3Q22 Pricing vs. C2Q22



Vertical Outlook

